

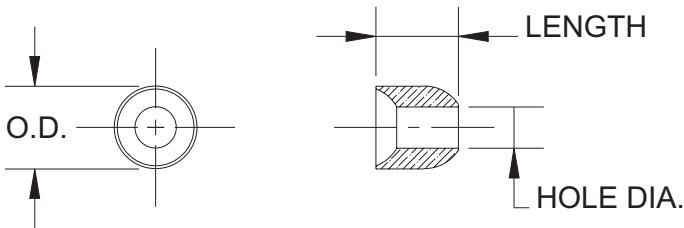
TYPE 80 Ceramic Insulators (2600°F)

Round



O.D.	HOLE DIA.	FOR GAGE	LENGTH	PART NO.	
				2 HOLE	4 HOLE
1/2"	11/64"	8	1"	8001	8009
			3"	8002	8010
1/4"	5/64"	14	1"	8003	8011
			3"	8004	8012
3/16"	5/64"	20	1"	8005	8013
			3"	8006	8014
3/16"	1/32"	24	1"	8007	8015
			3"	8008	8016

Fish Spine



HOLE DIA.	O.D.	LENGTH	FOR GAGE	PART NO.
5/32"	17/64"	1/4"	8	8017
5/64"	11/64"	11/64"	14	8018
1/16"	7/64"	7/64"	20	8019

OTHER SIZES AND TYPES ARE AVAILABLE

SPECIFY:

1. Material (Mullite or Alumina)
2. Number of holes
3. Applicable gage size
4. Type (round or oval) – dimension(s)
5. Length

