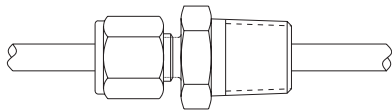


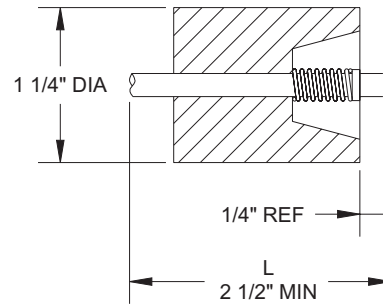
PROCESS CONNECTION OPTIONS

Option F
Compression Fitting

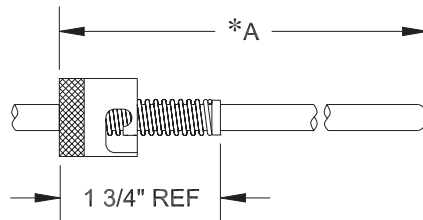


See page 22 for specifications.

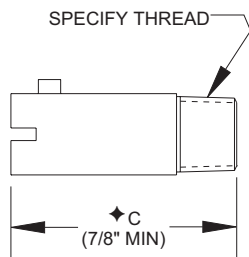
Option M
Spring Loaded Holding Magnet



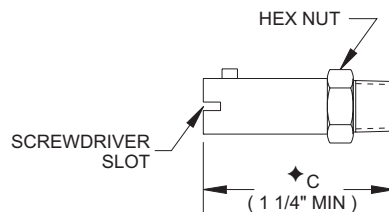
Option K
Spring Loaded Bayonet Cap



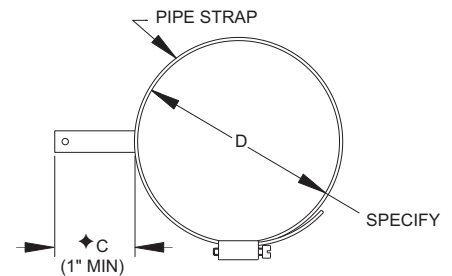
Accessories for K



K1



K2



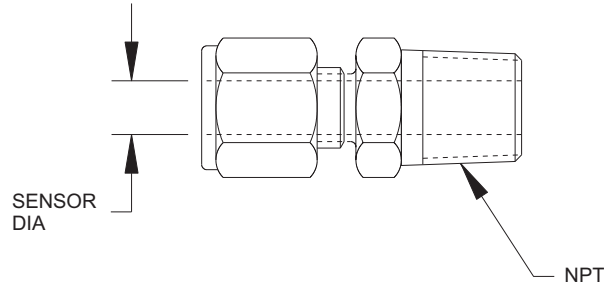
K3

* This dimension = required bore depth + adaptor length "C" + 1/16" or pipe clamp adaptor length "C" + 3/8"

◆ Specify dimensions "C" in 1/2" increments when longer lengths are required



TYPE 77 Male Compression Fittings



NPT CONNECTION SIZE								
SENSOR DIA	BRASS				STAINLESS STEEL			
	1/8"	1/4"	3/8"	1/2"	1/8"	1/4"	3/8"	1/2"
1/16"	7701	7707	7713	7719	7725	7731	7737	7743
1/8"	7702	7708	7714	7720	7726	7732	7738	7744
3/16"	7703	7709	7715	7721	7727	7733	7739	7745
1/4"	7704	7710	7716	7722	7728	7734	7740	7746
5/16"	7705	7711	7717	7723	7729	7735	7741	7747
3/8"	7706	7712	7718	7724	7730	7736	7742	7748

FOR FERRULE TYPE ADD SUFFIX	
T FOR TEFLON Adjustable (425°F Max.)	M FOR METAL Fixed after initial adjustment (1560°F Max.)

