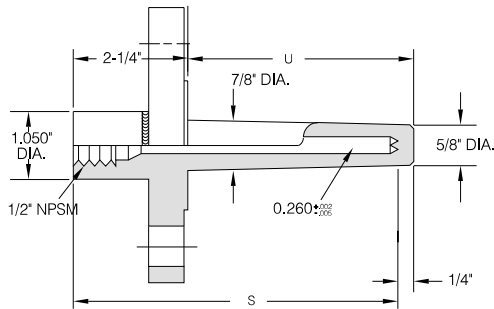
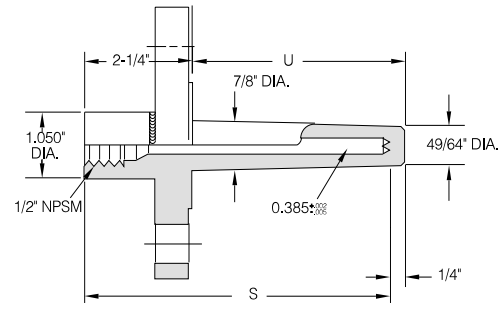


Raised Face, Flanged, Tapered Shank

1/4" NOMINAL BORE



3/8" NOMINAL BORE



GENERAL INFORMATION			PART #
S	U	FLANGE SIZE	
4"	2"	1"	10 W 0200 HF 260
		1-1/2"	15 W 0200 HF 260
		2"	20 W 0200 HF 260
6"	4"	1"	10 W 0400 HF 260
		1-1/2"	15 W 0400 HF 260
		2"	20 W 0400 HF 260
9"	7"	1"	10 W 0700 HF 260
		1-1/2"	15 W 0700 HF 260
		2"	20 W 0700 HF 260
12"	10"	1"	10 W 1000 HF 260
		1-1/2"	15 W 1000 HF 260
		2"	20 W 1000 HF 260
15"	13"	1"	10 W 1300 HF 260
		1-1/2"	15 W 1300 HF 260
		2"	20 W 1300 HF 260
18"	16"	1"	10 W 1600 HF 260
		1-1/2"	15 W 1600 HF 260
		2"	20 W 1600 HF 260
24"	22"	1"	10 W 2200 HF 260
		1-1/2"	15 W 2200 HF 260
		2"	20 W 2200 HF 260

GENERAL INFORMATION			PART #
S	U	FLANGE SIZE	
4"	2"	1"	10 W 0200 HF 385
		1-1/2"	15 W 0200 HF 385
		2"	20 W 0200 HF 385
6"	4"	1"	10 W 0400 HF 385
		1-1/2"	15 W 0400 HF 385
		2"	20 W 0400 HF 385
9"	7"	1"	10 W 0700 HF 385
		1-1/2"	15 W 0700 HF 385
		2"	20 W 0700 HF 385
12"	10"	1"	10 W 1000 HF 385
		1-1/2"	15 W 1000 HF 385
		2"	20 W 1000 HF 385
15"	13"	1"	10 W 1300 HF 385
		1-1/2"	15 W 1300 HF 385
		2"	20 W 1300 HF 385
18"	16"	1"	10 W 1600 HF 385
		1-1/2"	15 W 1600 HF 385
		2"	20 W 1600 HF 385
24"	22"	1"	10 W 2200 HF 385
		1-1/2"	15 W 2200 HF 385
		2"	20 W 2200 HF 385

LEGEND

U = Shank length below flange face
 S = Bore depth = instrument element length including its threads

1. See inside cover to compose part number.
2. To order plug and chain add a suffix to the part number. For brass add 1. For stainless, add 2.

