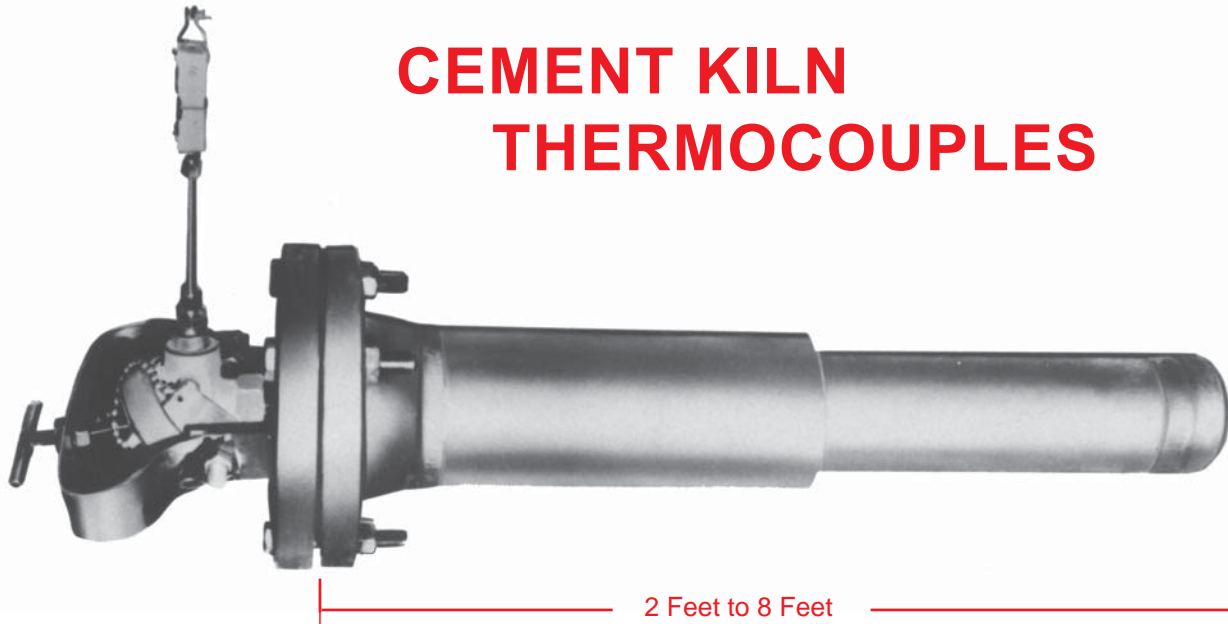


“Use of the TEMP-PRO sensor improved our thermocouple mean-time-between-failure rate from three months to more than three years!”

Instrumentation Engineer for a major American cement manufacturer.

CEMENT KILN THERMOCOUPLES



*“I would recommend the use of these thermocouples in any process in which **high temperatures** combined with **hostile agents** is the norm.”*

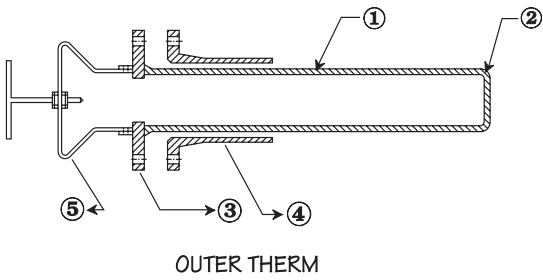
Senior Commissioning Engineer for a leading international cement manufacturer.

Features

- Special **TEMP-PRO THERM** Nickel Chromium Alloy Thermowells.
- Superior Performance Up To 2300 degrees Centigrade.
- Excellent Abrasion & Corrosion Resistance for use in Rotary Cement Kilns.
- Double-Well Design with Quick Release Function for Inner Thermowell and Thermocouple, allowing inspection and replacement without shutting down the kiln.
- Outstanding Corrosion Resistance in sulphurous, oxidizing, and reducing atmospheres: successfully used in petrochemical, smelting, refining, furnance, and heat treating applications.

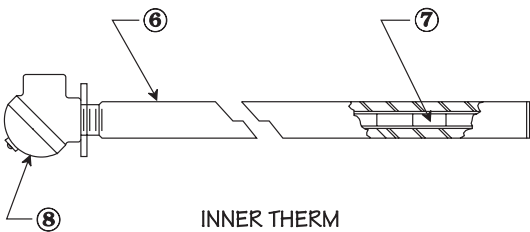
TEMP-PRO THERM is an extremely rugged nickel-chrome alloy with cobalt and tungsten added for stabilization and strengthening. Centrifugal casting of the outer thermowell assures removal of impurities, oxides, and gases from the alloy. The purity and densification of the alloy molecules contribute to the high strength and abrasion resistance of the thermocouple.



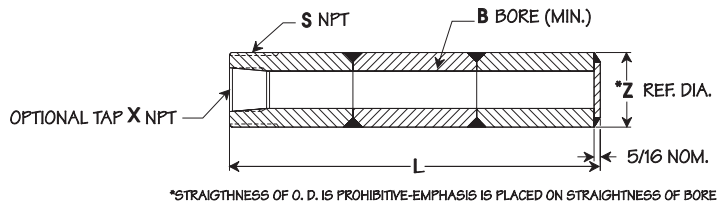


OUTER THERM

- ① Centrifugally cast TEMP-PRO THERM abrasion resistant outer thermowell, 3½" O.D. (Type STW-1216 & STW-1217)
- ② TEMP-PRO THERM and cap. Can be opened for fast response (TYPE STW-1216).
- ③ 4" - 150# ANSI 316.5 RF Carbon Steel Flange.
- ④ Four inch Schedule 80, 310 S.S. mounting nozzle, with 4" - 150# ANSI 316.5 Weld Neck Flange
- ⑤ Quick release retainer. Allows removal of inner thermowell and/or thermocouple without shutting down the kiln.
- ⑥ Special cast TEMP-PRO THERM inner thermowell, 1½" O.D. (Type 563)
- ⑦ Long life 8 AWG Chromel-Alumel thermocouple.
- ⑧ Heavy-duty cast iron industrial terminal head with terminal block.

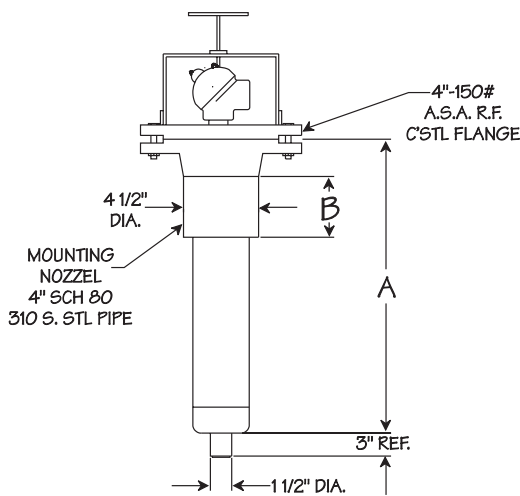


INNER THERM

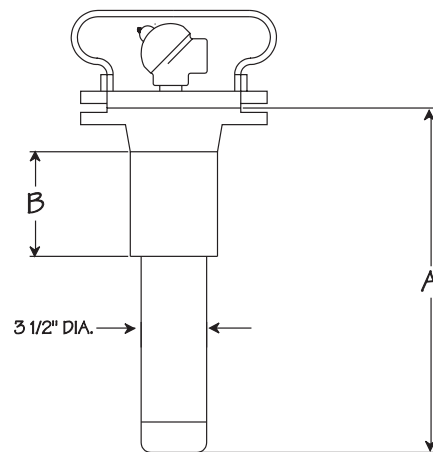


*STRAIGHTNESS OF O. D. IS PROHIBITIVE-EMPHASIS IS PLACED ON STRAIGHTNESS OF BORE

SPECIAL CAST TEMP-PRO THERM ALLOY
TYPE 563
LONG-LIFE SECTIONAL - WELDED
PROTECTION TUBE



OPEN END - FAST RESPONSE
TYPE STW - 1216



CLOSED END - INNER WELL SPRING
LOADS AGAINST OUTER WELL
TYPE STW - 1217

